

FREE

OVER 200,000 READERS!

MEMPHIS, TN
VOLUME 22
ISSUE 8
October 2022

Jabberblabber®

EARTH FRIENDLY FAMILY E-ZINE



OCTOBER 2022

Printable
worksheets
for
teachers!

FUN,
Educational
Activities
and Puzzles
for the
WHOLE
family!

KIRBY PINES

GRANDPARENTS
PAGE!

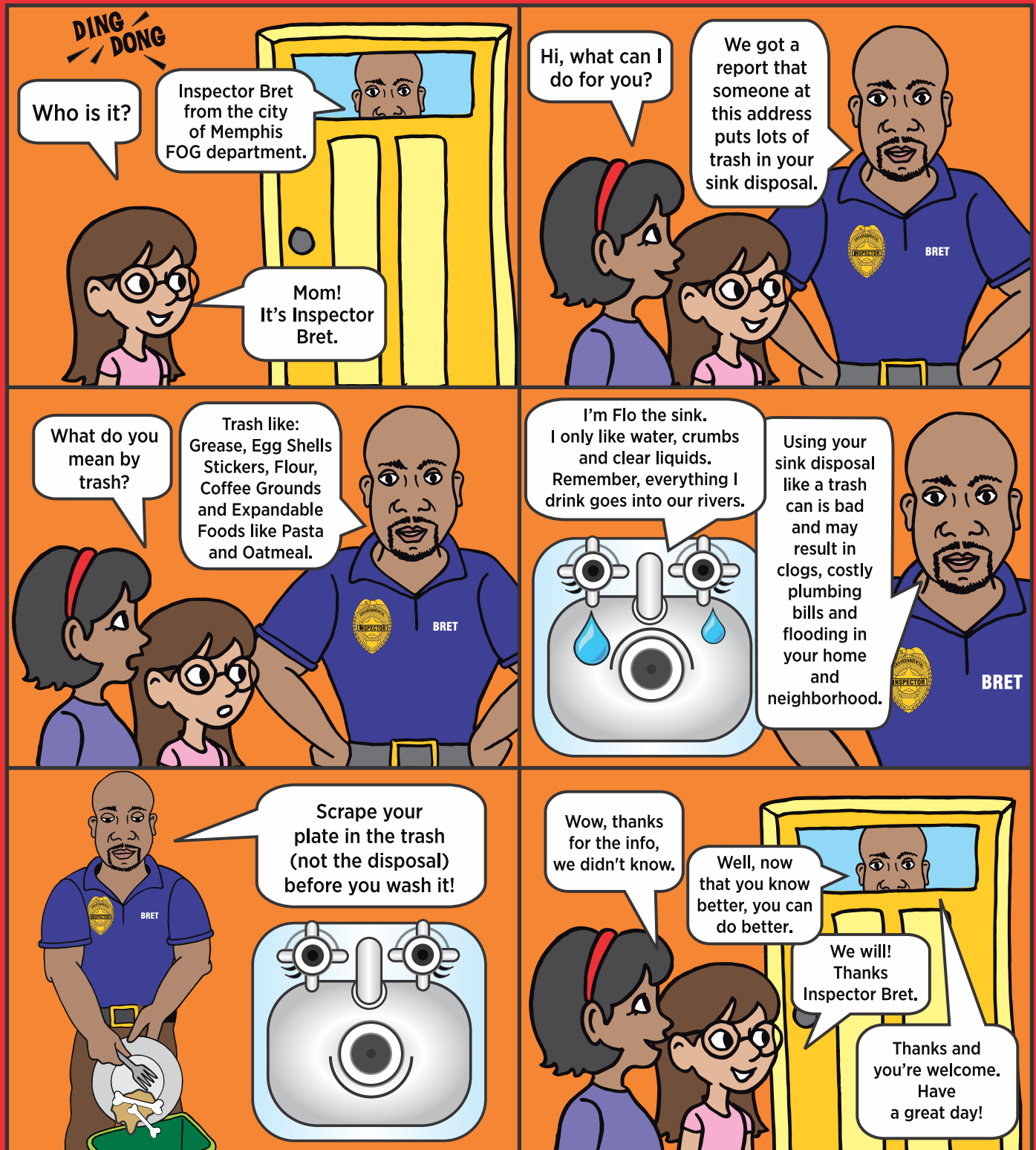
page 20

**PARENTS
PAGES!**

page 11



THE ADVENTURES OF INSPECTOR BRET!



City of
MEMPHIS

Environmental Division 901.636.8118

When in doubt, trash it!

HAPPY FALL Y'ALL!

Fall is my FAVORITE season in Memphis! I love the cooler temperatures, longer nights, and the leaves showing their true colors of red, yellow, and orange. Some of my favorite fall activities with my friends and family are riding bikes, going to the park, nature walks where we pick up pretty leaves, pods, nuts and berries for art projects, carving pumpkins, making popcorn and baking apples on long, chilly nights. When it's dark outside, we also love working on pages in this magazine, a great way to spend indoor time with my family.

Halloween begins the holiday season and I love to dress up and go trick or treating! Check out our Halloween safety tips for parents on page 11. I enjoy getting creative with my costumes, using old sheets or thrift store clothes to dress up as different characters. What are you planning to do on Halloween? Write to me and give me all the scoop! See page 5 for step by step instructions on how to be my Pen Pal!

If you're reading this E-Zine, thank our sponsors who make it available for free to parents, grandparents and teachers of young children. Please remember them the next time your family is making decisions about the services they provide.

Remember, BE GREEN LIKE ME and throw your candy wrappers in the trash, not on the ground.

Peace and Love, Jabberblabber

*Creators / Editors, Theresa Andreuccetti,
and Nikki Schroeder with
Meme and Jabberblabber.*



**Jabberblabber bought
a bag of candy
to give away on
Halloween.
It's hidden in this
E-Zine somewhere.
See if you can
help him find it!**



Helping Children Live Healthy & Happy!

Jabberblabber is published monthly by Jabberblabber, Inc.
415 South Front, # 114 • Memphis, TN 38103 • 901.278.5002
www.jabberblabber.com • jabberblabberlovesu@gmail.com
Facebook: Jabberblabber Family Magazine
instagram: @jabberblabberfamilymagazine

Editor: Theresa Andreuccetti Art Director: Nikki Schroeder
Contributing Writer: Gerard J. Billmeier, Jr., M.D.
Sponsorship Sales: Theresa Andreuccetti and Samantha Dunn
Jabberblabber Contributing Artists:
Karen Masel, Bev Hart and Beverly Holmgren

Jabber mail



"Be My Pen Pal" (see page 5), is a popular and regular feature in Jabberblabber E-Zine. Children from all over the Mid-South write letters to Jabberblabber, and he writes EVERYONE back! This fun exercise helps children with letter writing, handwriting and communication skills and gives them an opportunity to send and receive mail through the United States Postal Service (USPS).

Dear Jabberblabber,

My mom is the best mom ever and she plays games with me.

My favorite color is pink.

My favorite song is *Somewhere Over the Rainbow*.

My favorite vegetable is everything green.

My favorite book is *Everyone is a Rainbow*.

My question for you is: How many friends do you have?

Abigale Donald, age 7, Little Rock, AR

Dear Jabberblabber,

Thank you for your letter! My favorite pastime is probably....

painting and...reading, too! I have been busy, too, so it is okay!

I really like your handwriting. Your letters make me so so happy, and it is so fun to write, back and forth with you! I just lost a tooth, literally, just this morning! So hopefully the tooth fairy will come and visit me tonight. I bet you don't still lose teeth, do you? Also I

put my "official member card" in my wallet, so I'll always have it!

Have a great day!

Deborah Janell | Lucindia Pointer

With love

Dear Jabberblabber,

My family is really big. I have 3 brothers and 2 sisters.

My favorite color is blue.

My favorite song is *Midnight Rain* by Taylor Swift.

My favorite vegetable is nothing.

My favorite book is *Harry Potter*.

My question for you is: Do you brush your teeth??

Jason Pierson, age 11, Memphis, TN

Dear Jabberblabber,

My family is the very best except my brother who picks on me.

I'm nice to him anyway. I also have a super sweet sister.

My question for you is: Do you have a brother?

Myra Johnston, age 11, Olive Branch, MS



CHECK **MALCO.COM**
OR THE **MALCO APP**
TO VIEW THE
CURRENT SCHEDULE

TOTALLY
RENOVATED!

CORDOVA CINEMA

Germantown Parkway @ Macon

LUXURY RECLINERS • RESERVED SEATING
ALL-NEW ENTRY & LOBBY • SELF-SERVE DRINK STATIONS

FOLLOW
US!

[f @MALCOTHEATRES](#) / [@MALCOTHEATRES1915](#) [i](#)
[f @PREMIERLANESOXFORD](#) / [@PREMIERLANESOX](#) [t](#)

MARQUEE REWARDS
Member Exclusive
Available For A Limited Time
Only At Participating Locations

I LOVE
TUESDAYS

CHECK OUT MALCO'S
TUESDAY
TICKET PRICES!

RELAX AND RECLINE
LUXURY RESERVED RECLINER SEATING

MXT
MALCO THEATRE EXPERIENCE

COLLIERVILLE
CINEMA GRILL & MXT
POWERHOUSE
CINEMA GRILL & MXT

IMAX

PARADISO
CINEMA GRILL & IMAX

Gourmet MOVIE
POPCORN



THE AUTHENTIC
MALCO THEATRES
POPCORN YOU CRAVE,
NOW IN A CONVENIENT
ON-THE-GO BAG!
2.5oz & 5oz bags available at select
Mid-South retailers, [www.malco.com](#)
& the Malco app

Premier LANES
ENTERTAINMENT CENTER
THE AREA'S LARGEST ENTERTAINMENT CENTER
OXFORD, MS

BOWLING
LASER MAZE
ACTION ALLEY ARCADE
CAFÉ
PARTIES & EVENTS

NEXT TO OXFORD COMMONS CINEMA

ALL ROADS
LEAD TO

FUN!

Featuring Bowling with SuperTouch
LCD Scoring & Themed Interactive
Games, the Action Alley Arcade
& Prize Palace and Rowan Oak Cafe
with The Grove Bar!
- Daily Specials - Happy Hour -
[WWW.PREMIERLANES.COM](#)

GOT A
GROUP, PARTY,
OR EVENT?
LOOKING TO PUT THE
FUN

IN FUNDRAISER?
STRIKE UP A CONVO FOR DETAILS!
[salesoxford@premierlanes.com](#)

Malco MARQUEE REWARDS
ONLY MEMBERS RECEIVE
EXCLUSIVE ACCESS
TO **TUESDAY BARGAIN PRICES!**

NOT A MEMBER?
ENROLL FOR FREE TODAY!



Some Restrictions Apply. Review Terms & Conditions @ Malco.com

Summer Drive-In
5310 Summer Ave

A MEMPHIS TRADITION SINCE 1966



The Gift That
Says It All...

available at theatre box offices & [www.malco.com](#)

**celebrate
Birthdays
with US!**

Celebrate the Magic
of the Movies with a
Birthday Party at
Malco Theatres!



BE MY GREEN PENPAL

Print out the next page, write to me and join my "GREEN LIKE ME" club. I'll write back and send you a sticker & club card with your name on it!



As a club member, you pledge to practice the "10 ways to be green like me" (below)!



10 WAYS YOU CAN BE GREEN LIKE ME!

- 1. Turn it up or down 2 degrees!** Turn your heat down 2 degrees in the winter & your air conditioner up 2 degrees in the summer.
- 2. Turn it off!** When you're the last one to leave the room, ALWAYS turn off the lights!
- 3. Unplug it!** Reduce your home energy bill 10% by unplugging your cell phone charger, TV, stereo, and computer when you're not using them.
- 4. Say NO to plastic bags!** Bring your own bag when you go shopping. Plastic is bad for land & animals!
- 5. Shop Locally!** Support local farmers & local businesses who produce here at home.
- 6. Don't Idle!** If you are going to be parked more than 10 seconds, turn it off! Idling cars produce 25% of all CO₂ emissions.
- 7. Recycle!** Cans, bottles, cardboard and plastic. Donate unwanted clothes, toys & furniture.
- 8. Reuse!** Get a washable, reusable and refillable water bottle.
- 9. Conserve Water!** Turn off the faucet while brushing your teeth and take a short shower rather than a bath.
- 10. Can it!** Trash on the ground is unsightly & can end up in our rivers and oceans. Always throw trash in the trash can.

What you need:

- The template on the next page or a piece of paper.
- 2 envelopes • 2 stamps • Pen or Pencil

Step 1:

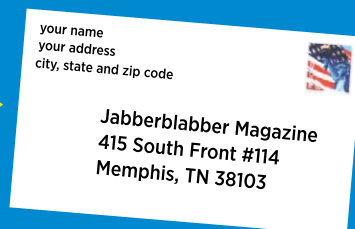
Answer the questions in the template or write me a letter. Then fold it and place it in one of the envelopes.

Step 2:

Address this envelope to me:

Jabberblabber
415 S. Front St #114
Memphis TN 38103

Place a stamp in the top right corner of the envelope.



Step 3:

Address the other envelope to yourself: Your name your address your zip code. Place a stamp in the top right corner. Fold and place in the other envelope with your letter.



Step 4:

MAIL IT! Place in 'OUTGOING MAIL' box at your home or various locations of the United States Post Office (USPS).

You will receive a reply and a **BE GREEN LIKE ME** bumper sticker in the mail in the next few weeks.

All letters submitted are eligible for copy/reprint in a future issue of Jabberblabber Family E-Zine.

Dear Jabberblabber,

This is what my costume is going to be for Halloween...

The reason I picked it was...

My favorite candy is...

I want to tell you about myself...

My question for you is...

Sincerely,

your name:

your age:

your address:

city, state and zip code:

I pledge to practice the "10 ways to be GREEN"

☐

UCOLORIT CONTEST

OCTOBER 2022

PRINT, COLOR & SEND in your masterpiece for the UCOLORIT random drawing!

WIN

a Jabberblabber bookmark, folder, sticker &

**ART CENTER GIFT
CERTIFICATE FOR \$25**

Fill in your info and mail to:

Jabberblabber | 415 South Front, #114 | Memphis, TN 38103

OR photograph your colored page and email to jabberblabberlovesu@gmail.com

Name _____

Address _____

City _____

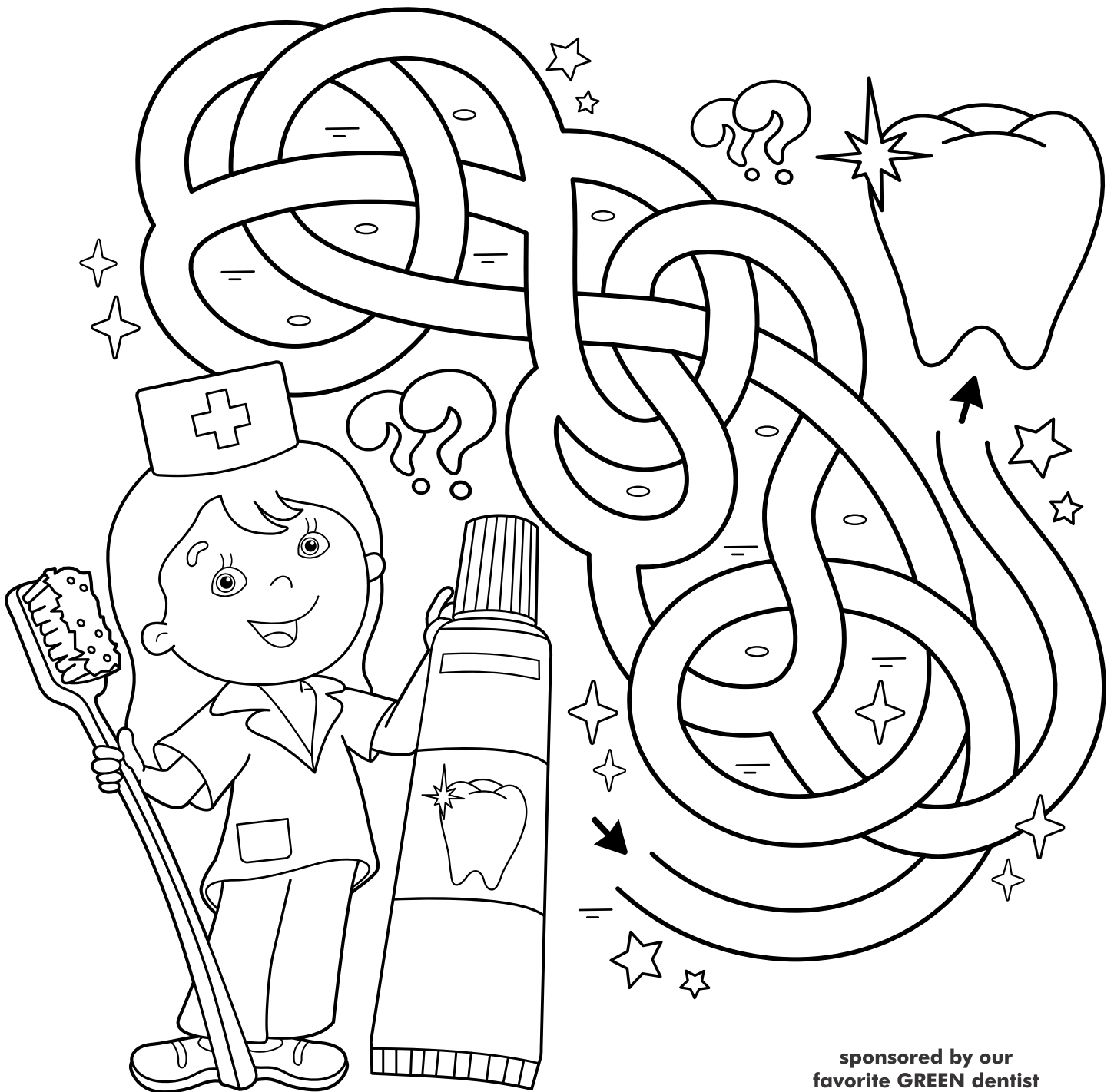
State _____ Zip _____

Age _____ (No age limit!)



HALLOWEEN

Dental maze!



See if you can help Heather, the dental hygienist, find her your way through the maze to the tooth!

You can go over and under!

Then have fun coloring the drawing!

sponsored by our
favorite GREEN dentist

msd

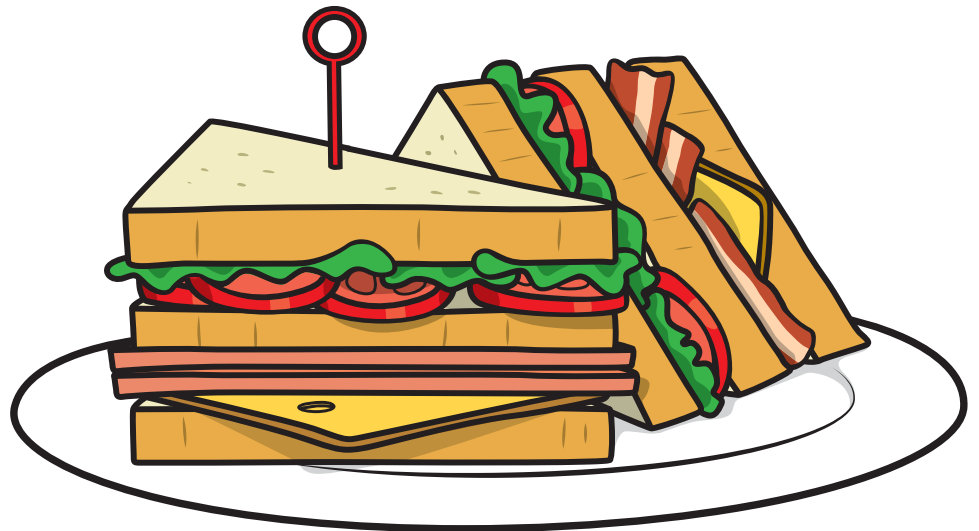
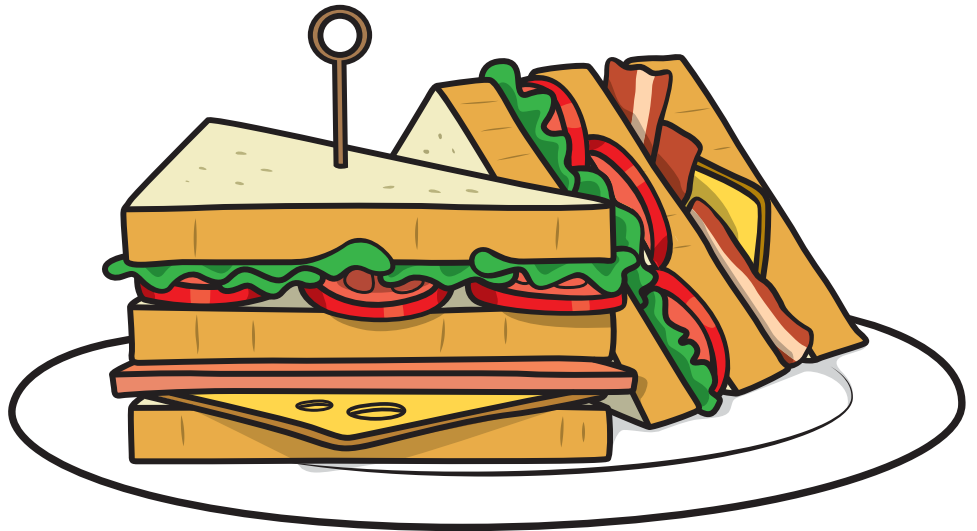
main street dental

99 S. Main Street 901.527.0716
www.msdmemphis.com



4 Locations in the Memphis Area:
3473 Poplar Ave Ste 102 - Memphis
1199 Ridgeway Rd - Memphis
1585 Chickering Lane - Cordova, TN
6A Stonebridge - Jackson, TN
We Cater and Deliver
www.jasonsdeli.com

**SEE IF
YOU CAN
FIND THE
6
DIFFERENCES
IN THE 2
SANDWICHES
TO THE RIGHT**



**WHY WE
DON'T USE
STYROFOAM!**



Answers on page 33

Styrofoam appears to last forever, as it is resistant to photolysis (the breaking down of materials by photons originating from a light source). This, combined with the fact that Styrofoam is lightweight and therefore floats, means that over time, a great deal of polystyrene has accumulated along coasts and waterways around the world. It is now considered the main component of marine debris. When Styrofoam containers are used for food, chemicals can leach into the food, affecting human health and the reproductive system. This is accentuated if people reheat the food while still in the container.

CELEBRATE INKTOBER!™



Take the Inktober Challenge to improve your inking skills and develop positive drawing habits. Thousands of artists take on the challenge every year. We sell ALL types of pens and markers and inks used for ink drawing

CREAT YOUR OWN COSTUME!



We sell face and body paint! Make your own halloween decorations with supplies that we stock: chenille stems, popsicle sticks, styrofoam balls, paints, craft, wire, clay and more.

COLOR BY NUMBER

art
center

SUPPLY STORE
& FRAME SHOP

1636 UNION

WWW.ARTCENTERMEMPHIS.COM

901.276.6321

- 1 green ●
- 2 blue ●
- 3 yellow ●
- 4 dark blue ●
- 5 brown ●
- 6 your skin tone ●



Halloween Safety Tips: Costumes, Candy, and Colored Contact Lenses

US Food and Drug Administration

Enjoy a safe and happy Halloween by following these guidelines.

Halloween is fast approaching, and you and your kids may be celebrating it a bit differently this year. Whatever form your celebration takes, make sure it includes safe hygiene practices such as covering your mouth and nose with a cloth face covering or mask when around others, maintaining social distance and frequent hand washing. The Centers for Disease Control also have tips for protecting yourself and others.

Enjoy a safe and happy Halloween by following these guidelines from FDA, the Consumer Product Safety Commission, and the Centers for Disease Control and Prevention:

- Wear costumes that say “flame resistant” on the label. If you make your costume, use flame-resistant fabrics such as polyester or nylon.
- Wear bright, reflective costumes or add strips of reflective tape so you’ll be more visible; make sure the costumes aren’t so long that you’re in danger of tripping.
- Wear makeup and hats rather than costume masks that can obscure your vision.
- Test the makeup you plan to use in advance.
- Vibrantly colored makeup is popular at Halloween. Check the FDA’s list of color additives to see if the colors are FDA approved.
- Don’t wear decorative (colored) contact lenses that appear to change how your eyes look due to the risk of eye injury, unless you have seen an eye care professional for a proper fitting and been given instructions for how to use the lenses.

Safe Treats

Eating sweet treats is also a big part of Halloween fun. If you’re concerned about food safety, there are some things you should know.

Before you or your children go trick-or-treating, remember these tips:

- Don’t eat candy until it has been inspected at home.
- Eat a snack before heading out to avoid the temptation of nibbling on a treat before it has been inspected.
- In case of a food allergy, check the label to ensure the allergen isn’t present. Tell children not to accept—or eat—anything that isn’t commercially wrapped.
- Parents of very young children should remove any choking hazards such as gum, peanuts, hard candies, or small toys from the Halloween bags.
- Inspect commercially wrapped treats for signs of tampering, such as an unusual appearance or discoloration, tiny pinholes, or tears in wrappers. Throw away anything that looks suspicious.



Eye Safety

The FDA joins eye care professionals in discouraging consumers from using illegal decorative (colored) contact lenses. These are contact lenses that have not been approved by the FDA for safety and effectiveness. Consumers should only use brand name contact lenses from well-known contact lens companies.

If you have never worn contact lenses before, Halloween should not be the first time you wear them. Experts warn that buying any kind of contact lenses—which are medical devices and regulated as such—without an examination and a prescription from an eye care professional can cause serious eye disorders and infections, which may lead to permanent vision loss. Despite the fact that it’s illegal to sell decorative contact lenses without a valid prescription, the FDA is aware that these lenses are still sold without a prescription on the Internet and in retail shops and salons—particularly around Halloween.

Although unauthorized use of decorative contact lenses is a concern year-round, Halloween is the time when people may be more inclined to use them, perhaps as costume accessories, which make the wearer’s eyes appear to glow in the dark, create the illusion of vertical “cat eyes,” or change the wearer’s eye color.

When they are bought and used without a valid prescription, without the involvement of a qualified eye care professional, or without appropriate follow-up care, it can lead to significant risks of eye injuries, including blindness.



DR.B

OCTOBER TOPIC: GRANDPARENTS & CHILD CARE

By Gerard J. Billmeier, Jr., M.D., FAAP

As a grandparent, you may be called upon to provide child care for your grandchild. This might be an occasional few hours or a regular time such as a scheduled day or two during the week.

Whatever the schedule, your role is a very unique and important one. It's good to remember you are not just "another babysitter". Your connection to your grandchild is a very special one which provides continuity between generations and is an irreplaceable role filled only by you.

Transporting your grandchild:

There may be times when you are asked to drop off and pick up your grandchild to and from a child care center or another sitter. Car safety is so important when children are passengers.

- Ensure that the child is properly buckled into an approved and age-appropriate car seat at all times while a passenger.
- Introduce yourself to the responsible person in charge at the site, and provide them with a phone number for you as a contact person.

Safety in your home:

- Inform yourself of new medical information. Ask your grandchild's parents to share important medical and safety information.
- Be aware that infants sleep safely on their backs. Never allow a small infant to sleep face down in a crib.
- Make sure any of your personal medications are secured away from the sight or grasp of a small and inquisitive child.
- Gates should be positioned at the top and bottom of stairways.
- Electrical outlets should be covered with childproof covers
- Soft covers should be placed over sharp furniture corners.
- Avoid toys with small parts or potential choking hazards.
- "Kiddie locks" should be installed on cabinets in reach of small children preventing access to dangerous chemicals and cleansers.
- Never leave an infant unattended in a tub or sink filled with water.
- Never leave an infant in an infant carrier atop a counter or elevated space.
- Think about an escape plan in advance and provide smoke detectors throughout the house.



Make the most of these special days when you can bond with your grandchild. Offer to perform this task regularly if you are able. Sharing stories known to the family and reading to the child often are great ways to enrich his life. Above all, treasure these precious times when you are able to introduce this grandchild to your special world. It is a most valuable endeavor.

References:

Tips for Grandparents Who Provide Child Care (<http://www.healthychildren.org>) | *Car Seats: Information for Families* (<http://www.healthychildren.org>)
Caring for Your Baby and Young Child: Birth to Age 5, 6th Edition (American Academy of Pediatrics)

Hello Little Pollution Preventers! It's time for one of Gurgle's storm drain games!

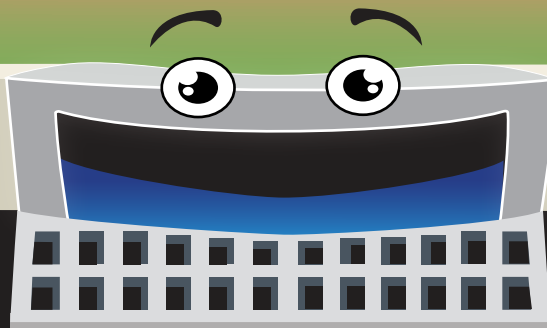
Can you find and circle what is wrong below?



Scan for the Rules!



Scan to Meet Gurgle!

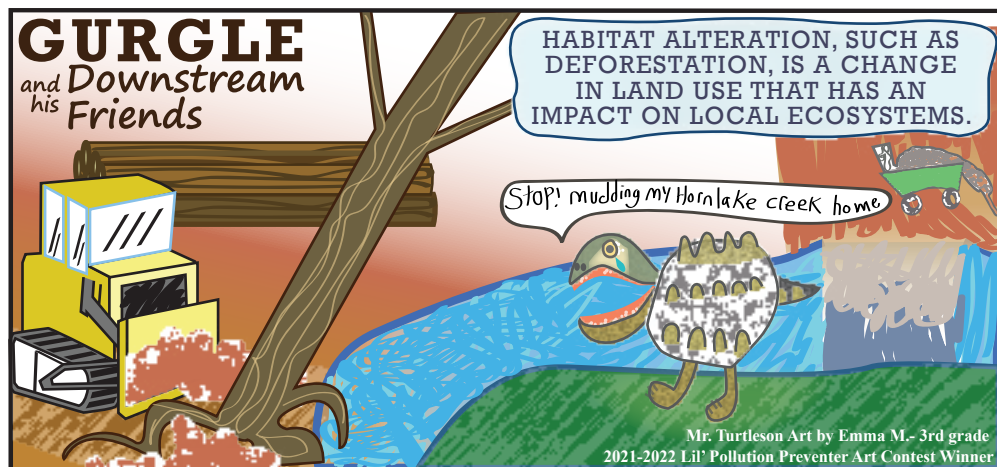


Show what you know!
Enter the 2022-2023
Lil' Pollution Preventer
Art Contest!

MEMPHIS
STORM
WATER.com

Deadline is March 10, 2023.

Emma won the art contest last year! See her character below in our new comic strip! YOU COULD BE NEXT!





Hi Kids!

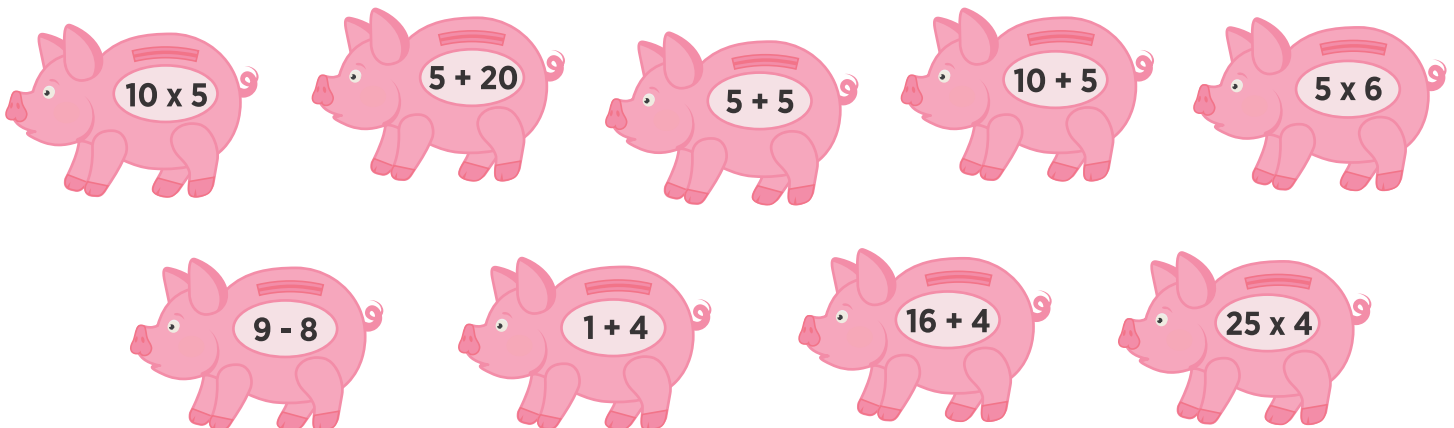
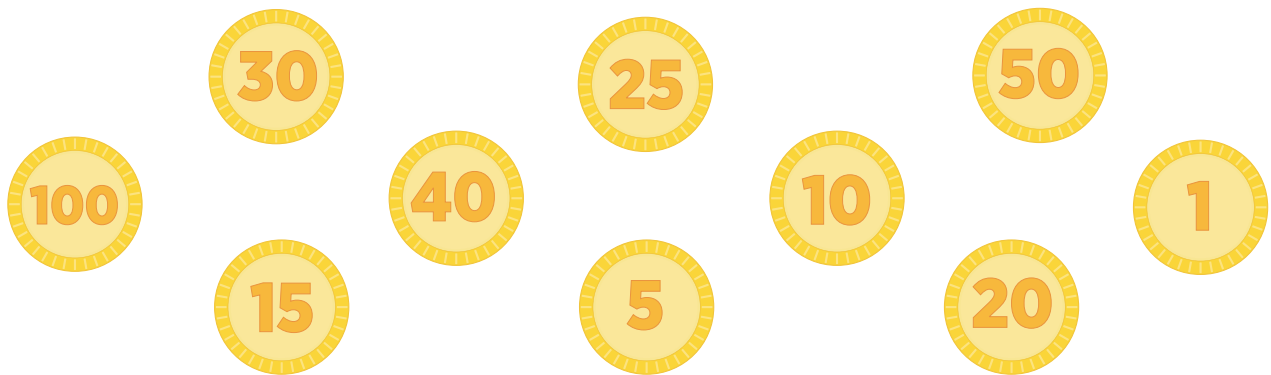
I'M CASH the BANK!

It's NEVER
too early
to learn
about
money!

A savings account is a great way for you to learn about the value of money and how you can fulfill your future dreams by starting at a young age!

PUT THE COINS IN THE PIGGY BANK

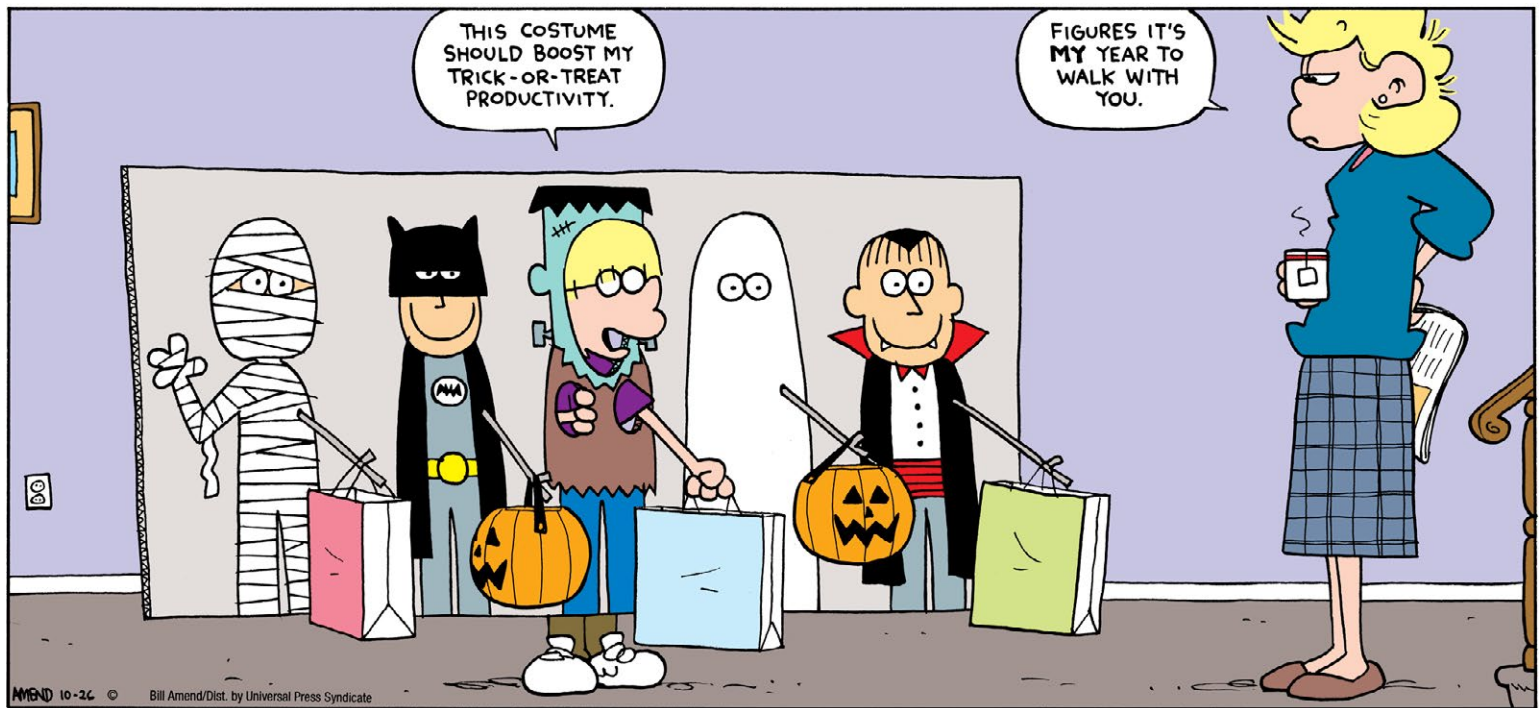
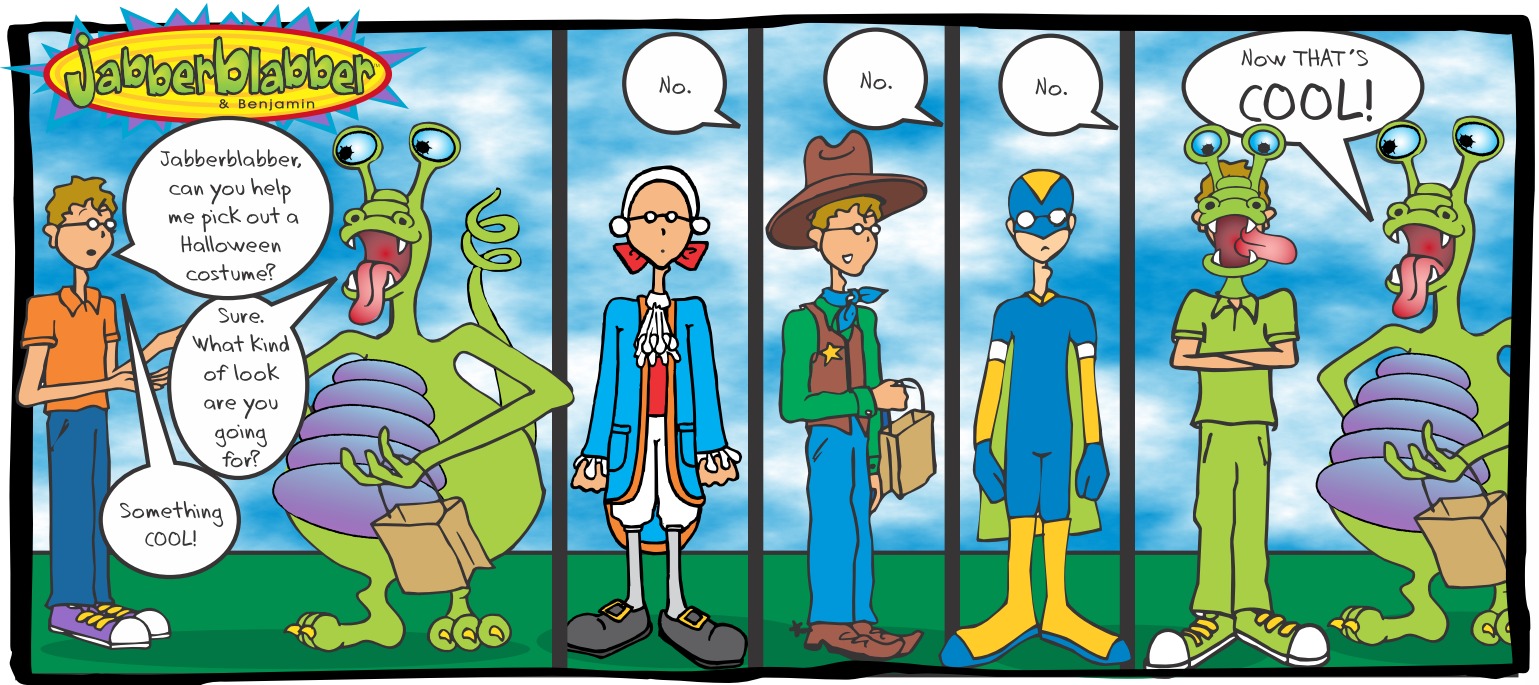
Draw a line from the coin to the piggy bank with the matching amount.
There is one coin that doesn't belong.



BankTennessee
www.banktennessee.com

COLLIERVILLE 1125 W. Poplar • 854-0854 & 100 E. Mulberry on the Square • 854-7854
GERMANTOWN 2915 Forest Hill Irene • 755-8815 **EAST MEMPHIS** 5540 Poplar • 767-8170
DOWNTOWN MEMPHIS 30 N. Second • 316-2186 **MUNFORD** 26 Munford • 837-2586
RIPLEY 312 Cleveland • 731-635-1234

COMICPAGE



Jabber Jokes

1. What monster plays tricks on Halloween?
2. Why did the scarecrow get a promotion?
3. What's a witch's favorite subject in school?
4. What kind of music do mummies love?
5. What is a skeleton's favorite instrument?
6. What is in a ghost's nose?



Answers on page 23



GERMANTOWN PERFORMING ARTS CENTER

November 5 | 10am

Visit GPACweb.com or call the box office
(901)751-7500

**PAY
WHAT YOU
CAN!**



With all-new tunes from mömandpöp
and loads of audience
participation, this is one adventure
you won't want to miss!

Germantown Performing Arts Center
1801 Exeter Rd. Germantown TN



Jabberblabber® EDIBLE ART YUMMY MUMMY PIZZA

What You Need:

- 1 plain bagel (3-1/2 inch, cut horizontally in half)
- 2 Tbsp. pizza sauce
- 2 sticks string cheese or cheese slices cut in strips
- 4 slices black olives

Use organic when possible.

Directions:

HEAT oven to 400°F.

SPREAD bagel halves with sauce.

Pull cheese into thin strips; place in random criss-cross
fashion on tops of bagels to resemble mummy bandages.
Trim ends with kitchen shears. Add olives for the eyes.

PLACE on a baking sheet.

BAKE 10 min. or until bagels are crisp and cheese is melted.



**ALWAYS
USE ADULT
SUPERVISION!**

OCTOBER HOLIDAYS

Oct 1 | Saturday | Astronomy Day

Oct 2 | Sunday | National Custodial Worker Day

Oct 3 | Monday | National Boyfriends Day

Oct 4 | Tuesday | Yom Kippur

Oct 5 | Wednesday | World Teacher's Day

Oct 6 | Thursday | Mad Hatter Day

Oct 7 | Friday | World Smile Day

Oct 8 | Saturday | Pierogi Day

Oct 9 | Sunday | Curious Events Day

Oct 10 | Monday | Columbus Day

Oct 11 | Tuesday | It's My Party Day

Oct 12 | Wednesday | Old Farmers Day

Oct 13 | Thursday | International Skeptics Day

Oct 14 | Friday | National Dessert Day

Oct 15 | Saturday | I Love Lucy Day

Oct 16 | Sunday | Dictionary Day

Oct 17 | Monday | Wear Something Gaudy Day

Oct 18 | Tuesday | Chocolate Cupcake Day

Oct 19 | Evaluate | Your Life Day

Oct 20 | Thursday | International Sloth Day

Oct 21 | Friday | Count your Buttons Day

Oct 22 | Saturday | Caps Lock Day

Oct 23 | Sunday | Mole Day

Oct 24 | Monday | Bologna Day

Oct 25 | Tuesday | Sourest Day

Oct 26 | Wednesday | Howl at the Moon Day and Night

Oct 27 | Thursday | Black Cat Day

Oct 28 | Friday | International Animation Day

Oct 29 | Saturday | Internet Day

Oct 30 | Sunday | Candy Corn Day

Oct 31 | Monday | Halloween



Jabberblabber® FIND IT™

See if you can find the **11** differences in the two photos.



MATH MAZES

Find your way from top to bottom by following the path of correct answers.
You can only exit a cell if the number matches the answer to the problem.

START **LEVEL 1**

$\begin{array}{r} 8 \\ -3 \\ \hline \end{array}$	5	7	$\begin{array}{r} 8 \\ +1 \\ \hline \end{array}$	9	13	$\begin{array}{r} 8 \\ +7 \\ \hline \end{array}$	12	6	$\begin{array}{r} 5 \\ +1 \\ \hline \end{array}$	4	6	$\begin{array}{r} 6 \\ +3 \\ \hline \end{array}$
5		10		15		6		9				
5		4		13		4		1				
$\begin{array}{r} 3 \\ +2 \\ \hline \end{array}$	5	5	$\begin{array}{r} 3 \\ +2 \\ \hline \end{array}$	6	12	$\begin{array}{r} 7 \\ +4 \\ \hline \end{array}$	8	6	$\begin{array}{r} 8 \\ -4 \\ \hline \end{array}$	4	1	$\begin{array}{r} 7 \\ -6 \\ \hline \end{array}$
5		2		11		5		1				
6		5		9		4		7				
$\begin{array}{r} 14 \\ -8 \\ \hline \end{array}$	5	7	$\begin{array}{r} 10 \\ -4 \\ \hline \end{array}$	9	6	$\begin{array}{r} 11 \\ -5 \\ \hline \end{array}$	5	2	$\begin{array}{r} 10 \\ -5 \\ \hline \end{array}$	5	7	$\begin{array}{r} 13 \\ -6 \\ \hline \end{array}$
6		6		3		8		7				
3		2		11		6		7				
$\begin{array}{r} 10 \\ -7 \\ \hline \end{array}$	2	7	$\begin{array}{r} 7 \\ -3 \\ \hline \end{array}$	3	12	$\begin{array}{r} 8 \\ +2 \\ \hline \end{array}$	10	2	$\begin{array}{r} 13 \\ -8 \\ \hline \end{array}$	4	10	$\begin{array}{r} 5 \\ +2 \\ \hline \end{array}$
3		4		7		5		9				
14		4		9		8		15				
$\begin{array}{r} 7 \\ +7 \\ \hline \end{array}$	16	5	$\begin{array}{r} 10 \\ -8 \\ \hline \end{array}$	2	7	$\begin{array}{r} 5 \\ +4 \\ \hline \end{array}$	12	9	$\begin{array}{r} 16 \\ -8 \\ \hline \end{array}$	8	14	$\begin{array}{r} 8 \\ +6 \\ \hline \end{array}$
11		3		6		8		13				

LEVEL 2 **START**

$\begin{array}{r} 60 \\ \div 12 \\ \hline \end{array}$	6	21	$\begin{array}{r} 19 \\ +4 \\ \hline \end{array}$	22	21	$\begin{array}{r} 39 \\ -18 \\ \hline \end{array}$	18	21	$\begin{array}{r} 24 \\ -3 \\ \hline \end{array}$	24	196	$\begin{array}{r} 15 \\ \times 14 \\ \hline \end{array}$
5		23		22		20		210				
12		3		24		120		33				
$\begin{array}{r} 156 \\ \div 13 \\ \hline \end{array}$	11	4	$\begin{array}{r} 64 \\ \div 16 \\ \hline \end{array}$	5	30	$\begin{array}{r} 46 \\ -19 \\ \hline \end{array}$	27	105	$\begin{array}{r} 15 \\ \times 7 \\ \hline \end{array}$	105	36	$\begin{array}{r} 11 \\ \times 3 \\ \hline \end{array}$
12		2		27		112		33				
90		40		14		26		66				
$\begin{array}{r} 16 \\ \times 6 \\ \hline \end{array}$	96	44	$\begin{array}{r} 22 \\ +21 \\ \hline \end{array}$	46	17	$\begin{array}{r} 12 \\ +2 \\ \hline \end{array}$	11	24	$\begin{array}{r} 17 \\ +9 \\ \hline \end{array}$	27	60	$\begin{array}{r} 14 \\ \times 4 \\ \hline \end{array}$
80		43		12		29		56				
8		31		13		25		4				
$\begin{array}{r} 54 \\ \div 9 \\ \hline \end{array}$	5	32	$\begin{array}{r} 17 \\ +12 \\ \hline \end{array}$	29	11	$\begin{array}{r} 19 \\ -9 \\ \hline \end{array}$	10	23	$\begin{array}{r} 53 \\ -28 \\ \hline \end{array}$	26	3	$\begin{array}{r} 20 \\ \div 10 \\ \hline \end{array}$
6		28		8		24		2				
40		3		13		30		11				
$\begin{array}{r} 21 \\ +19 \\ \hline \end{array}$	40	2	$\begin{array}{r} 23 \\ -21 \\ \hline \end{array}$	2	10	$\begin{array}{r} 160 \\ \div 16 \\ \hline \end{array}$	10	32	$\begin{array}{r} 18 \\ +14 \\ \hline \end{array}$	33	14	$\begin{array}{r} 37 \\ -23 \\ \hline \end{array}$
43		5		10								

Answers on page 30

WORD OF THE MONTH

inspirit verb
in·spir·it

: instilling life, energy, courage,
or vigor into something or someone.

*"The worksheets, printed from this
Jabberblabber E-Zine, **inspired** the
students to be happier and more creative."*



GRANDPARENTS PAGE

Celebrating our senior adults in the prime of their lives!



Grandparent of the Month – Sydney Wagner

Sydney Wagner moved to Kirby Pines in 2014 with her late husband of 56 years, Shelton, from their home in Memphis. She has a son and daughter, six grandchildren and two great grands.

Sydney received her professional education at the Memphis School of Commerce graduating in 1958. She was employed at the American Surety Company as a secretary.

Sydney is very busy around Kirby Pines. She enjoys reading, writing and playing Mah Jongg. To stay active she likes to walk, volunteers and visits with her family.

She has traveled to all but one of the US states, Mexico, Canada, Italy, Germany, Austria, Belgium, France and Switzerland. Her most memorable trips were Switzerland and a two month trip to Alaska.

Her favorite thing about being a grandparent is getting to share with them and watching them grow while praying constantly for them.

Congratulations Sydney, for being Jabberblabber's Grandparent of the Month!

GRANDPARENTS WORD SEARCH PUZZLE

Happy Halloween

Find the words hidden in the grid of letters.



T	L	U	F	T	H	G	I	R	F	S	P	O	V	D	M	Z
H	E	P	C	Z	C	S	J	S	T	Y	S	O	S	O	K	N
G	P	U	M	P	K	I	N	A	Y	E	D	B	T	S	S	O
I	N	O	T	I	P	G	B	E	G	V	R	N	A	P	X	I
L	R	T	T	A	C	K	C	A	L	B	A	D	M	O	A	T
I	E	R	C	R	C	D	U	Y	S	H	Q	U	U	O	G	O
W	T	I	W	A	G	Z	W	E	P	P	B	P	L	K	O	P
T	N	C	C	P	U	E	I	R	E	E	R	Z	E	Y	M	G
X	A	K	B	P	C	L	Z	Z	S	Z	S	H	T	B	Z	W
U	L	O	R	A	T	G	D	O	G	H	I	W	I	T	C	H
E	O	R	I	R	I	Z	O	R	H	S	P	E	L	L	X	O
V	K	T	M	I	O	G	X	N	O	C	O	N	J	U	R	E
M	C	R	S	T	P	J	T	C	S	N	B	E	W	B	O	C
O	A	E	T	I	K	F	T	E	T	V	O	G	A	J	I	C
O	J	A	O	O	Z	D	S	S	N	O	T	E	L	E	K	S
N	A	T	N	N	B	P	G	B	P	E	U	C	R	X	W	V
J	G	V	E	J	S	U	O	I	R	E	T	S	Y	M	F	O

sponsored by

Kirby Pines

LifeCare Community

LifeStyle and LifeCare

kirbypines.com

AMULET
APPARITION
BATS
BLACK CAT
BOO
BRIMSTONE
CAKLE

CAULDRON
COBWEB
CONJURE
EERIE
FRIGHTFUL
GHOST
GOOSEBUMPS

JACK-O-LANTERN
MOON
MYSTERIOUS
PHANTOM
POTION
PUMPKIN
SKELETON

SPELL
SPOOKY
TRICK OR TREAT
TWILIGHT
WITCH

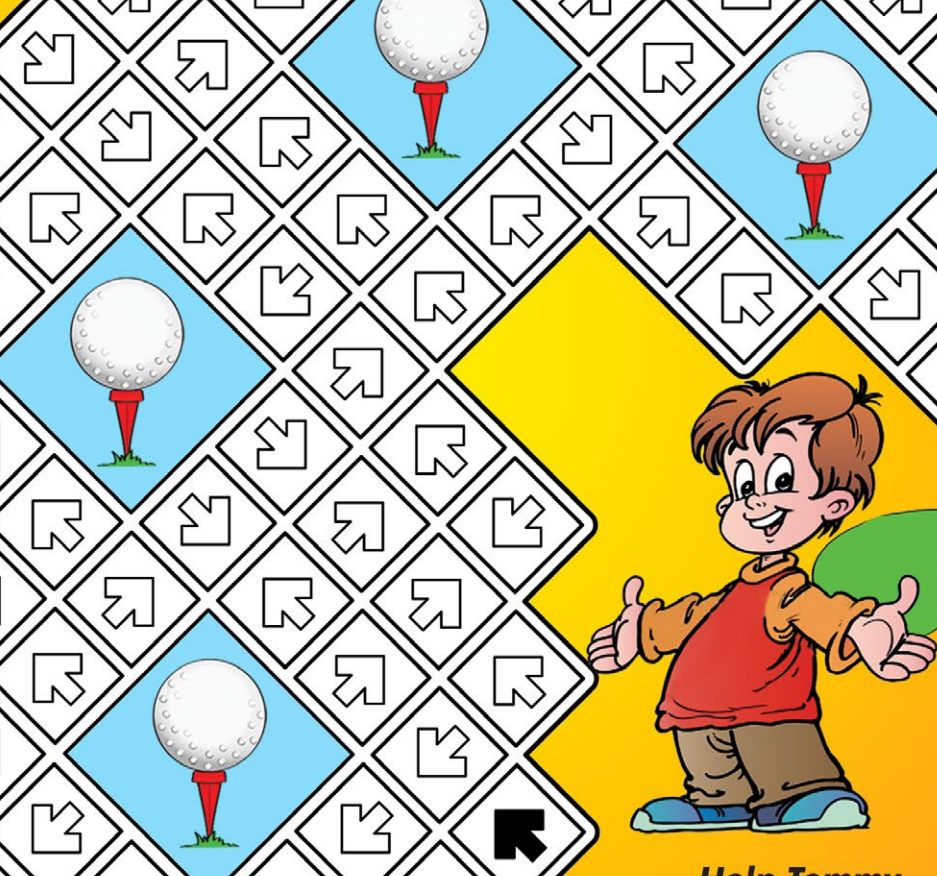




5484 Summer Avenue | Memphis, TN 38134
901.386.2992 | puttputt.com/memphis-tn/

**GET A
FREE \$10
GAME CARD**

king
...



Help Tommy
get through the maze and
collect all the golf balls!

Answer on page 32

**Help Tommy
get through the maze and
collect all the golf balls!**

jabberGENIUS

THESE ARE TOUGH! TRY THEM, IF YOU DARE!

Answer on page 31

Penny Puzzlers

Can you make two rows of four pennies by moving just one coin?



Think About It!

How could the 22nd and 24th U.S. Presidents have the same parents, but weren't brothers?



WORD PUZZLERS

Figure out the words or phrases from the word pictures below.

1

JUS144TICE

2

E

3

GOLD

4

person ality

5

don't
react



PLAYHOUSE

ON THE
SQUARE

COLORING PAGE!

THE WIZARD OF OZ

NOV 11TH - DEC 22ND

PLAYHOUSE ON THE SQUARE



www.playhouseonthesquare.org

Theatre Ed: 901-725-0776

Jabberblabber[®] SPOTTEDU[™]

on Facebook
and
Instagram



Answers to Jokes on pg 15:

1. Prank-enstein! 2. He was outstanding in his field. 3. Spelling! 4. Wrap music.
5. A trombone. 6. Boo-gers.



**25 YEARS OF
INDEPENDENT FILM**

presented by:

duncan williams INVEST
INSPIRE

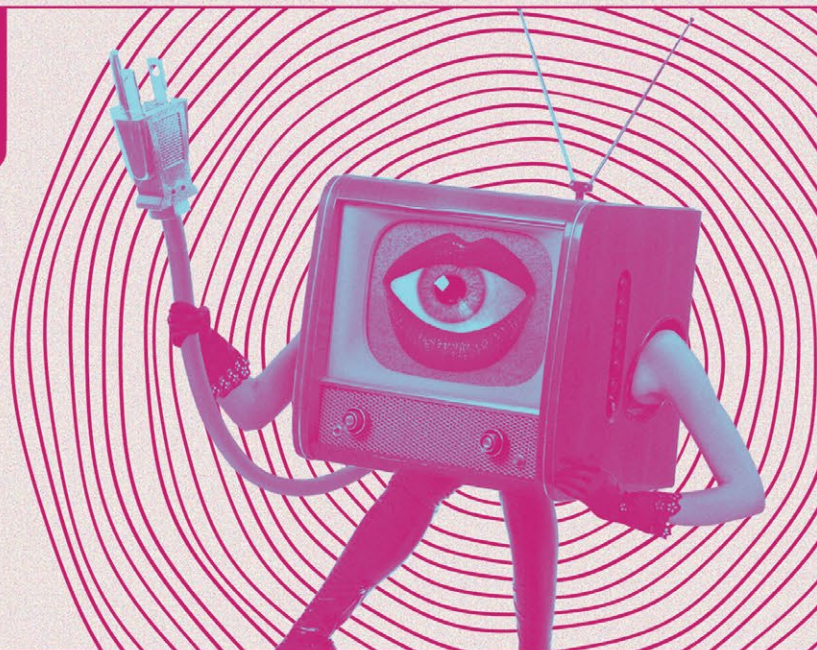
MEMPHO

MALCO

DW

DoWell.
Duncan Williams, Inc.
www.dowell.com

AutoZone



INDIE MEMPHIS FILM FESTIVAL

October 19 - 24, 2022

passes & tickets on sale now at indiememphis.org/imff22

**See if you can
find the film related
words below in
the word search
to the right.**

SOUNDTRACK
CAST
EDITING
ACTION
ACTOR
PRODUCTION
CAMERAMAN
PLOT
SCENE
CREW
STORYBOARD
DIRECTOR
SCRIPT
SET
STUDIO

E	B	M	N	R	R	R	M	U	J	S	C	G	S	O	M	A	H	X	D
M	S	C	R	I	P	T	V	T	M	H	L	R	E	V	B	R	P	A	Z
Q	T	C	R	G	U	N	U	S	L	A	R	A	U	N	M	I	X	Z	X
E	W	J	G	E	N	C	W	B	J	X	N	O	X	V	Q	Z	J	U	H
C	O	F	G	H	I	U	M	L	P	R	O	D	U	C	T	I	O	N	S
N	R	C	F	G	B	G	P	F	N	K	J	D	O	I	D	U	T	S	L
N	T	I	Y	O	L	Q	W	P	R	B	C	R	C	P	Q	O	I	W	B
O	M	T	Y	B	Y	J	V	S	S	M	L	A	L	H	Q	W	Y	Y	S
M	A	H	J	B	J	T	D	E	G	V	I	O	R	B	H	N	D	M	C
F	L	S	U	N	R	J	U	S	A	D	T	B	G	T	J	D	W	A	T
W	D	J	V	U	R	H	A	O	N	T	I	Y	X	D	D	O	B	Y	A
F	G	S	P	X	E	N	R	B	A	C	C	R	D	O	Q	N	U	T	D
V	X	W	V	X	P	Q	A	T	M	G	N	O	E	V	F	E	U	H	O
J	W	N	O	N	O	I	T	C	A	S	E	T	Y	C	N	A	I	O	P
U	Q	F	H	T	B	F	A	B	R	W	K	S	C	E	T	Y	T	F	S
D	S	C	G	A	I	S	J	K	E	F	Q	R	C	U	J	O	P	X	E
K	J	J	C	B	T	K	K	I	M	A	E	S	R	I	W	P	R	S	L
N	G	T	F	P	N	C	N	M	A	W	W	J	Z	C	T	G	P	O	P
R	O	G	G	N	H	C	G	N	C	J	V	G	C	V	Y	E	W	Q	C
R	M	Q	K	L	G	D	C	C	R	G	N	I	T	I	D	E	A	T	I

jabberblabber™ **QUICK** **DRAW** with Quick Draw Drew

Finish drawing
Paul and his Pumpkin
by connecting the dots!

Everyone's
an artist!
You can
do it!

Did you know . . .

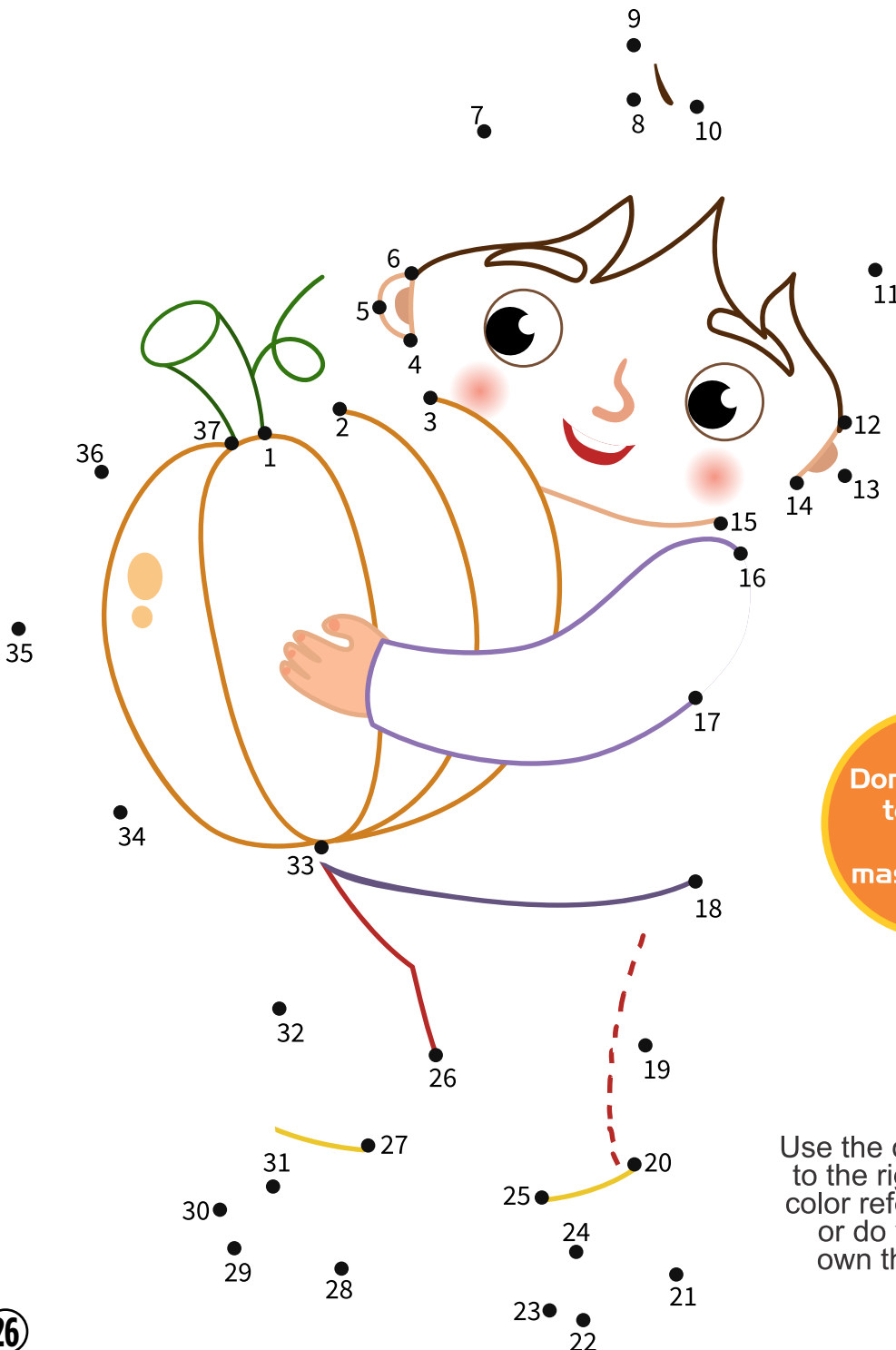
Pumpkins are actually a fruit!

Many people assume that
pumpkins are vegetables.
However, while they are in
the squash family, they are,
in fact, a fruit, just like
apples and oranges.

Pumpkins have internal seeds,
which make them fruit.
They are closely related to
melons and cucumbers,
as well.

Don't forget
to color
your
masterpiece.

Use the cartoon
to the right for
color reference
or do your
own thing!



Help protect a child's future.



When you take Stewards of Children sexual abuse prevention and response training, you join a network of adults empowered to keep kids safe. Over 29,000 Shelby County adults have taken the training.

Contact Kris at kcrim@MemphisCAC.org or 901.888.4363 to schedule training for you or your organization. Visit MemphisCAC.org to learn more.

Upcoming Virtual Sessions:

Saturday, October 15, 9:00 am – 11:30 am

Wednesday, November 2, 1:00 pm – 3:30 pm

Saturday, November 19, 9:00 am – 11:30 am



Healing and transforming children's lives for 30 years.

Otherlands

COFFEE BAR

641 South Cooper Ave
278-4994

we've got it, you need it!

Here are just a few of the reasons you should drop by:

- best coffee in the world
- muffins, scones, banana bread
- bring your own mug discount
- full service espresso bar
- free wifi
- no tvs!
- cards for all occasions
- secret gift shop

cafe hours:
mon-sun
7am-8pm

gift shop
hours:
call
901.278.4994

unique gifts & accessories



Locally owned and operated since 1994

#BeAirAware

Improve Air Quality by remembering the
"COOL 5"

5 cool ways to reduce ozone in Shelby County:

Share the Ride Carpool, use public transportation, bike, or even walk!
It saves money and reduces pollution levels.

Link the Trips When driving, do all of your errands in a row instead of returning home in between. It saves money, gas, and reduces pollution.

Stop at the Click When refueling the gas tank in your car, do not top off after the click. It harms your car and increases pollution levels!

Don't Idle Your Car You can reduce pollution levels by avoiding drive-through lines and shutting your engine off if waiting for more than 30 seconds.

Mow When the Sun is Low Gasoline lawn mowers are much dirtier than automobiles. Mow after 6pm to reduce ozone levels in the summer.



Find out more at
ShelbyTNHealth.com
Air Quality
Improvement
Branch



Public Health
Prevent. Promote. Protect.
Shelby County Health Department

Follow us @ ShelbyTNHealth





MATH MAZES

ANSWERS

START **LEVEL 1**

The grid for Level 1 contains the following arithmetic problems in each cell:

$\begin{array}{r} 8 \\ -3 \\ \hline 5 \end{array}$	5 7	$\begin{array}{r} 8 \\ +1 \\ \hline 9 \end{array}$	9 13	$\begin{array}{r} 8 \\ +7 \\ \hline 15 \end{array}$	12 6	$\begin{array}{r} 5 \\ +1 \\ \hline 6 \end{array}$	4 6	$\begin{array}{r} 6 \\ +3 \\ \hline 9 \end{array}$
5		10		15		6		9
3		4		13		4		1
$\begin{array}{r} 5 \\ +2 \\ \hline 7 \end{array}$	5 5	$\begin{array}{r} 3 \\ +2 \\ \hline 5 \end{array}$	6 12	$\begin{array}{r} 7 \\ +4 \\ \hline 11 \end{array}$	8 6	$\begin{array}{r} 8 \\ -4 \\ \hline 4 \end{array}$	4 1	$\begin{array}{r} 7 \\ -6 \\ \hline 1 \end{array}$
5		2		11		5		1
6		5		9		4		7
$\begin{array}{r} 14 \\ -8 \\ \hline 6 \end{array}$	5 7	$\begin{array}{r} 10 \\ -4 \\ \hline 6 \end{array}$	6	$\begin{array}{r} 11 \\ -5 \\ \hline 6 \end{array}$	5 2	$\begin{array}{r} 10 \\ -5 \\ \hline 5 \end{array}$	5 7	$\begin{array}{r} 13 \\ -6 \\ \hline 7 \end{array}$
6		6		3		8		7
3		2		11		6		7
$\begin{array}{r} 10 \\ -7 \\ \hline 3 \end{array}$	2 7	$\begin{array}{r} 7 \\ -3 \\ \hline 4 \end{array}$	3 12	$\begin{array}{r} 8 \\ +2 \\ \hline 10 \end{array}$	10 2	$\begin{array}{r} 13 \\ -8 \\ \hline 5 \end{array}$	4 10	$\begin{array}{r} 5 \\ +2 \\ \hline 7 \end{array}$
3		4		10		5		9
14		4		9		8		15
$\begin{array}{r} 7 \\ +7 \\ \hline 14 \end{array}$	16 5	$\begin{array}{r} 10 \\ -8 \\ \hline 2 \end{array}$	2 7	$\begin{array}{r} 5 \\ +4 \\ \hline 9 \end{array}$	12 9	$\begin{array}{r} 16 \\ -8 \\ \hline 8 \end{array}$	8 14	$\begin{array}{r} 8 \\ +6 \\ \hline 14 \end{array}$
11		3		6		8		13

The red solution path starts at the top-left 'START' arrow and follows the correct answers through the grid to the bottom-right.

LEVEL 2 **START**

The grid for Level 2 contains the following arithmetic problems in each cell:

$\begin{array}{r} 60 \\ \div 12 \\ \hline 5 \end{array}$	6 21	$\begin{array}{r} 19 \\ +4 \\ \hline 23 \end{array}$	22 24	$\begin{array}{r} 39 \\ -18 \\ \hline 21 \end{array}$	18 21	$\begin{array}{r} 24 \\ -3 \\ \hline 21 \end{array}$	24 196	$\begin{array}{r} 15 \\ \times 14 \\ \hline 210 \end{array}$
5		28		22		20		210
12		3		24		120		33
$\begin{array}{r} 156 \\ \div 13 \\ \hline 12 \end{array}$	11 4	$\begin{array}{r} 64 \\ \div 16 \\ \hline 4 \end{array}$	5 30	$\begin{array}{r} 46 \\ -19 \\ \hline 27 \end{array}$	27 105	$\begin{array}{r} 15 \\ \times 7 \\ \hline 105 \end{array}$	105 36	$\begin{array}{r} 11 \\ \times 3 \\ \hline 33 \end{array}$
12		2		27		112		33
90		40		14		26		66
$\begin{array}{r} 16 \\ \times 6 \\ \hline 96 \end{array}$	96 44	$\begin{array}{r} 22 \\ +21 \\ \hline 43 \end{array}$	46 17	$\begin{array}{r} 12 \\ +2 \\ \hline 14 \end{array}$	11 24	$\begin{array}{r} 17 \\ +9 \\ \hline 26 \end{array}$	27 60	$\begin{array}{r} 14 \\ \times 4 \\ \hline 56 \end{array}$
80		43		12		29		56
8		34		13		25		4
$\begin{array}{r} 54 \\ \div 9 \\ \hline 6 \end{array}$	5 32	$\begin{array}{r} 17 \\ +12 \\ \hline 29 \end{array}$	29 11	$\begin{array}{r} 19 \\ -9 \\ \hline 10 \end{array}$	10 23	$\begin{array}{r} 53 \\ -28 \\ \hline 25 \end{array}$	26 3	$\begin{array}{r} 20 \\ \div 10 \\ \hline 2 \end{array}$
6		28		8		24		2
40		3		13		30		11
$\begin{array}{r} 21 \\ +19 \\ \hline 40 \end{array}$	40 2	$\begin{array}{r} 23 \\ -21 \\ \hline 2 \end{array}$	2 10	$\begin{array}{r} 160 \\ \div 16 \\ \hline 10 \end{array}$	10 82	$\begin{array}{r} 18 \\ +14 \\ \hline 32 \end{array}$	33 14	$\begin{array}{r} 37 \\ -23 \\ \hline 14 \end{array}$
43		5		10		29		13

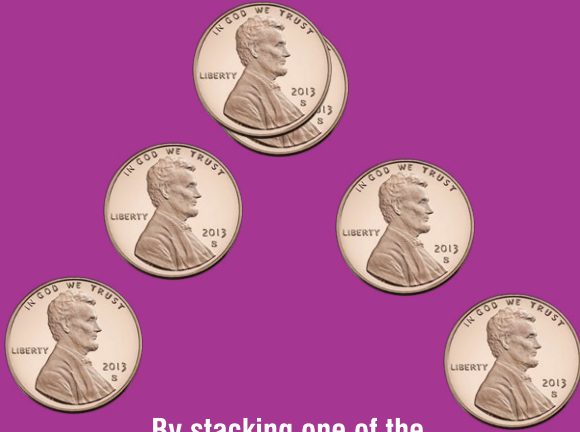
The red solution path starts at the top-right 'START' arrow and follows the correct answers through the grid to the bottom-left.

jabberGENIUS

ANSWERS

Penny Puzzlers

Can you make two rows of four pennies by moving just one coin?



By stacking one of the pennies from the row that already has four on the intersecting coin both rows have four pennies.

Think About It!

Grover Cleveland was elected twice to become the 22nd and the 24th president of the United States.



WORD PUZZLERS

Figure out the words or phrases from the word pictures below.

1

JUS144TICE

A gross injustice

2

E

Partially (Partial E)

3

GOLD

Stone cold

4

person ality

Split personality

5

don't

react

Don't overreact



**Putt-Putt®
Golf**

Memphis Since 1958

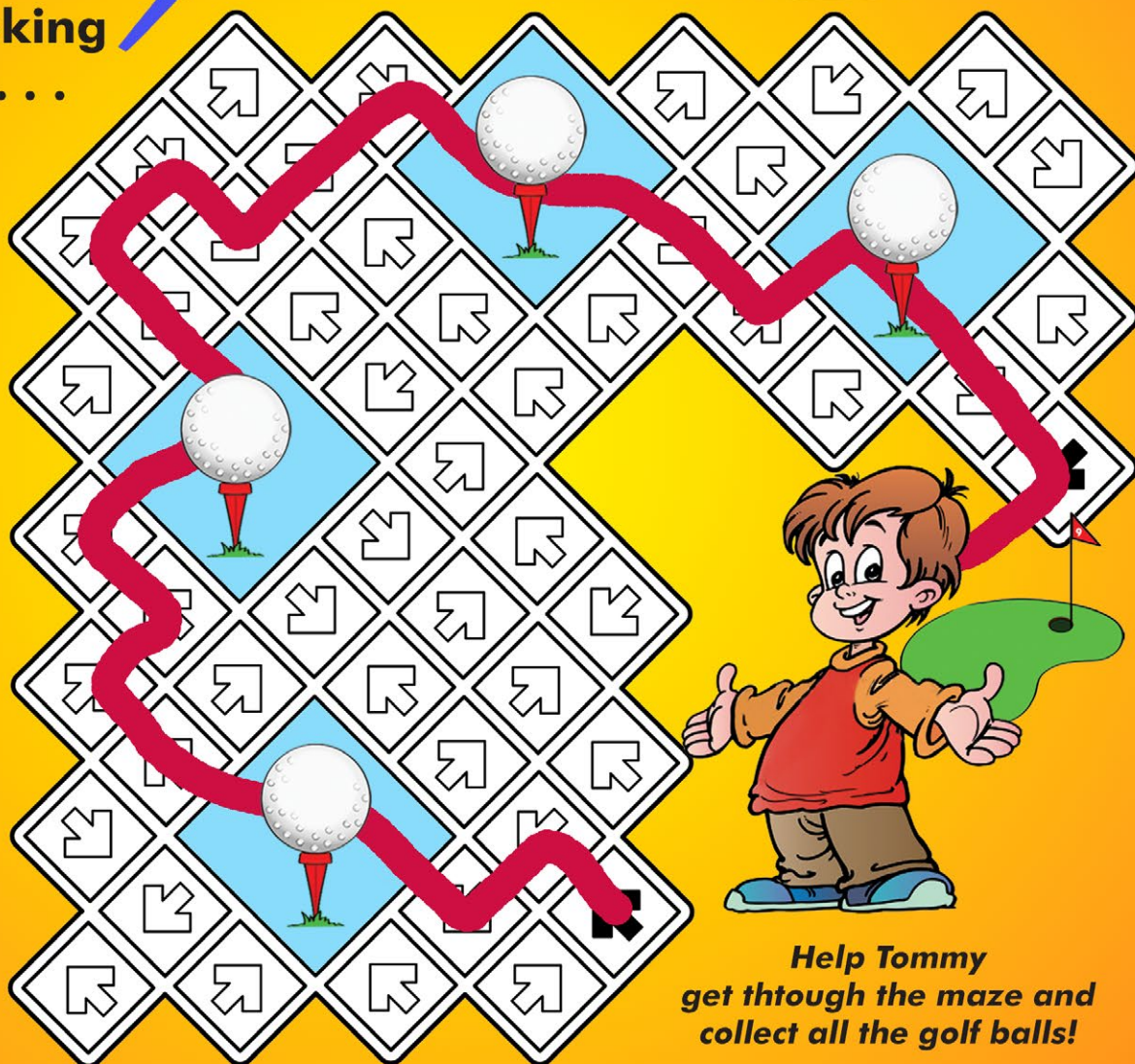
5484 Summer Avenue | Memphis, TN 38134
901.386.2992 | puttputt.com/memphis-tn/

October
**GOLF
MAZE**

**GET A
FREE \$10
GAME CARD**

Mention
JABBERBLABBER
when booking
a party . . .

ARCADE
GO-KARTS
**BUMPER
CARS**
**BUMPER
BOATS**
**BATTING
CAGES**
**DRIVING
RANGE**



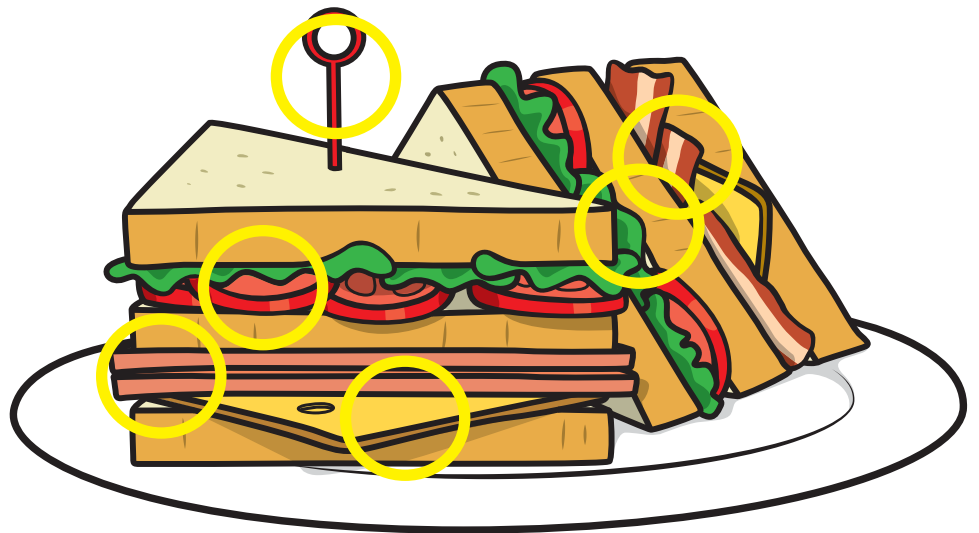
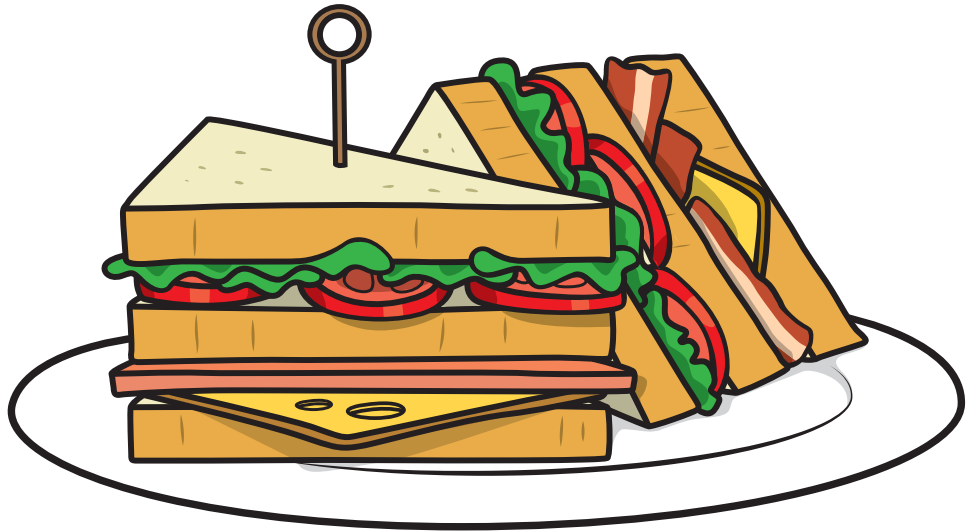
*Help Tommy
get through the maze and
collect all the golf balls!*



4 Locations in the Memphis Area:
3473 Poplar Ave Ste 102 - Memphis
1199 Ridgeway Rd - Memphis
1585 Chickering Lane - Cordova, TN
6A Stonebridge - Jackson, TN
We Cater and Deliver
www.jasonsdeli.com

ANSWERS

SEE IF
YOU CAN
FIND THE
6
DIFFERENCES
IN THE 2
SANDWICHES
TO THE RIGHT



WHY WE
DON'T USE
STYROFOAM!



Styrofoam appears to last forever, as it is resistant to photolysis (the breaking down of materials by photons originating from a light source). This, combined with the fact that Styrofoam is lightweight and therefore floats, means that over time, a great deal of polystyrene has accumulated along coasts and waterways around the world. It is now considered the main component of marine debris. When Styrofoam containers are used for food, chemicals can leach into the food, affecting human health and the reproductive system. This is accentuated if people reheat the food while still in the container.